

The current flow diagram moves through the following screens:

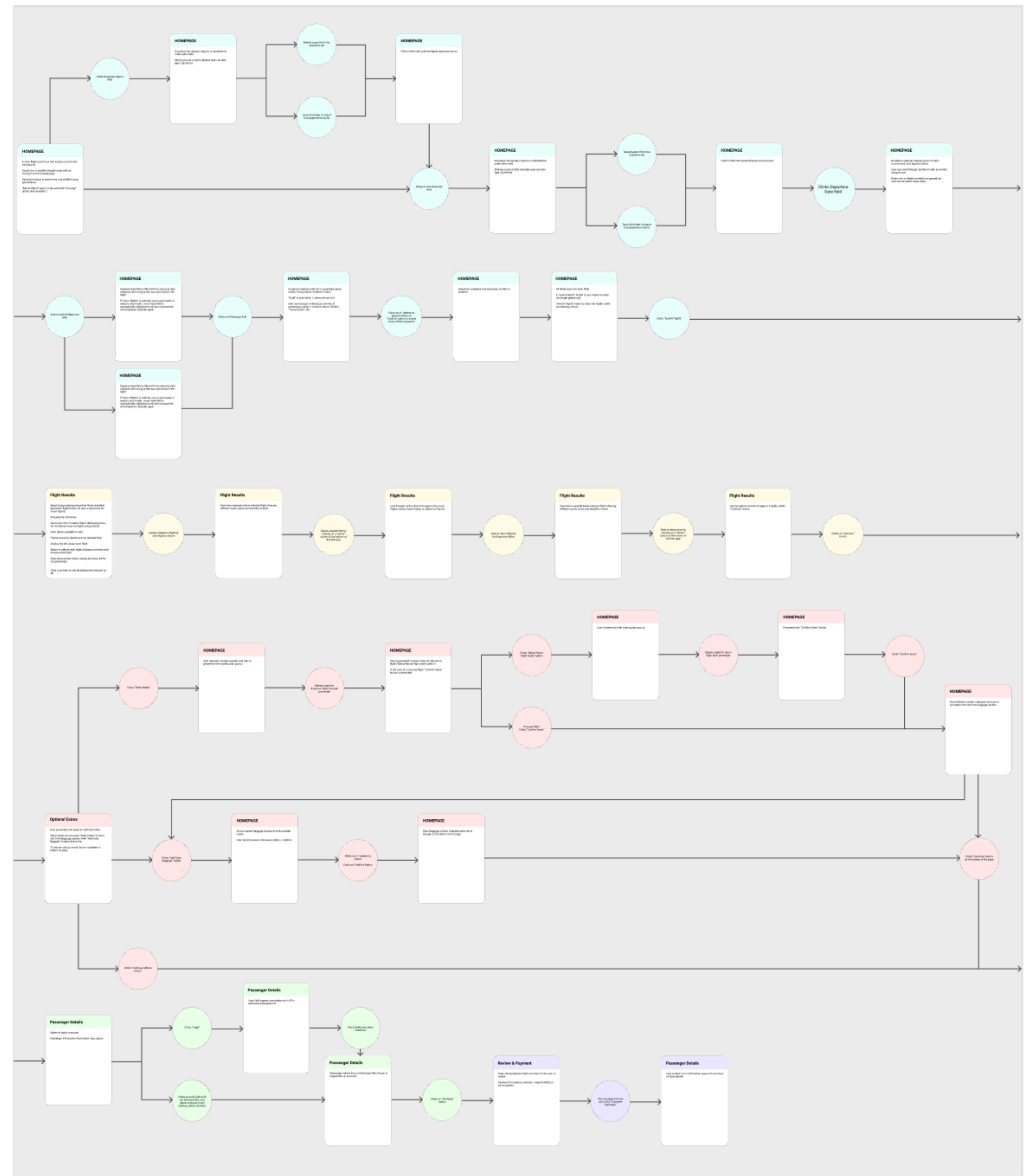
- ## 1. Homepage

- ## 2. Flight Results

- ### 3. Optional Extras

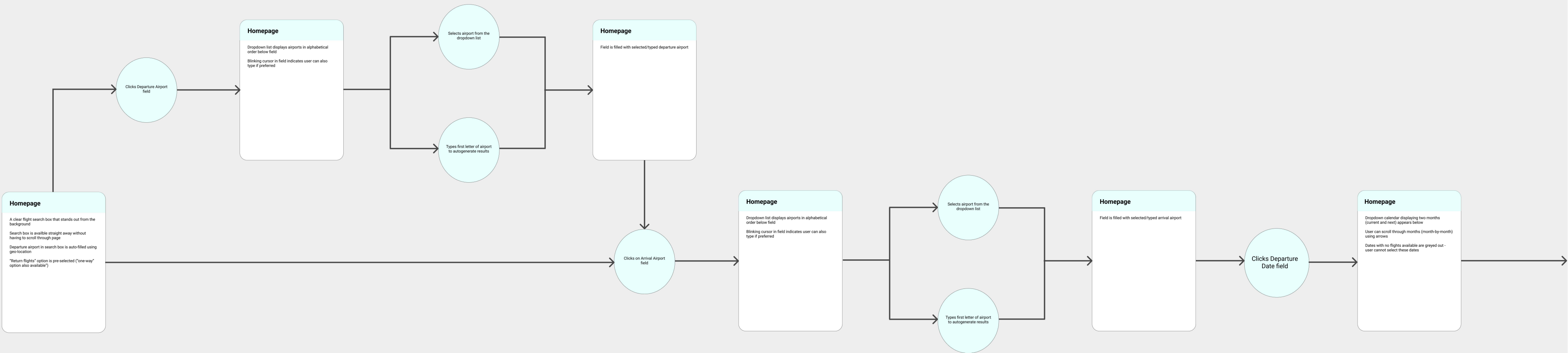
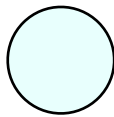
- #### 4. Passenger Details

- ## 5. Review & Payment

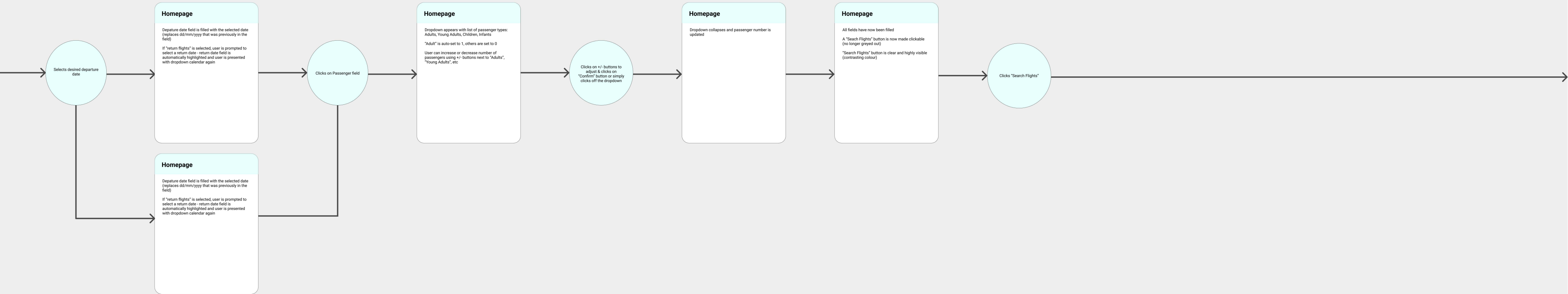
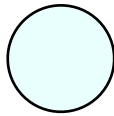


Flow Diagram Close-Up 1

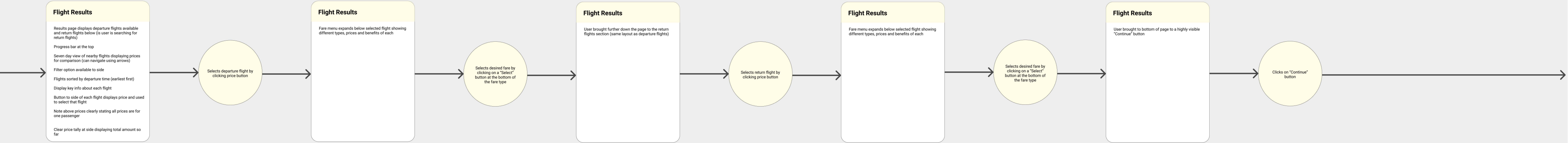
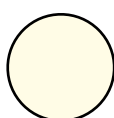
Homepage 1/2



Homepage 2/2



Flight Results



Flow Diagram Close-Up 2

